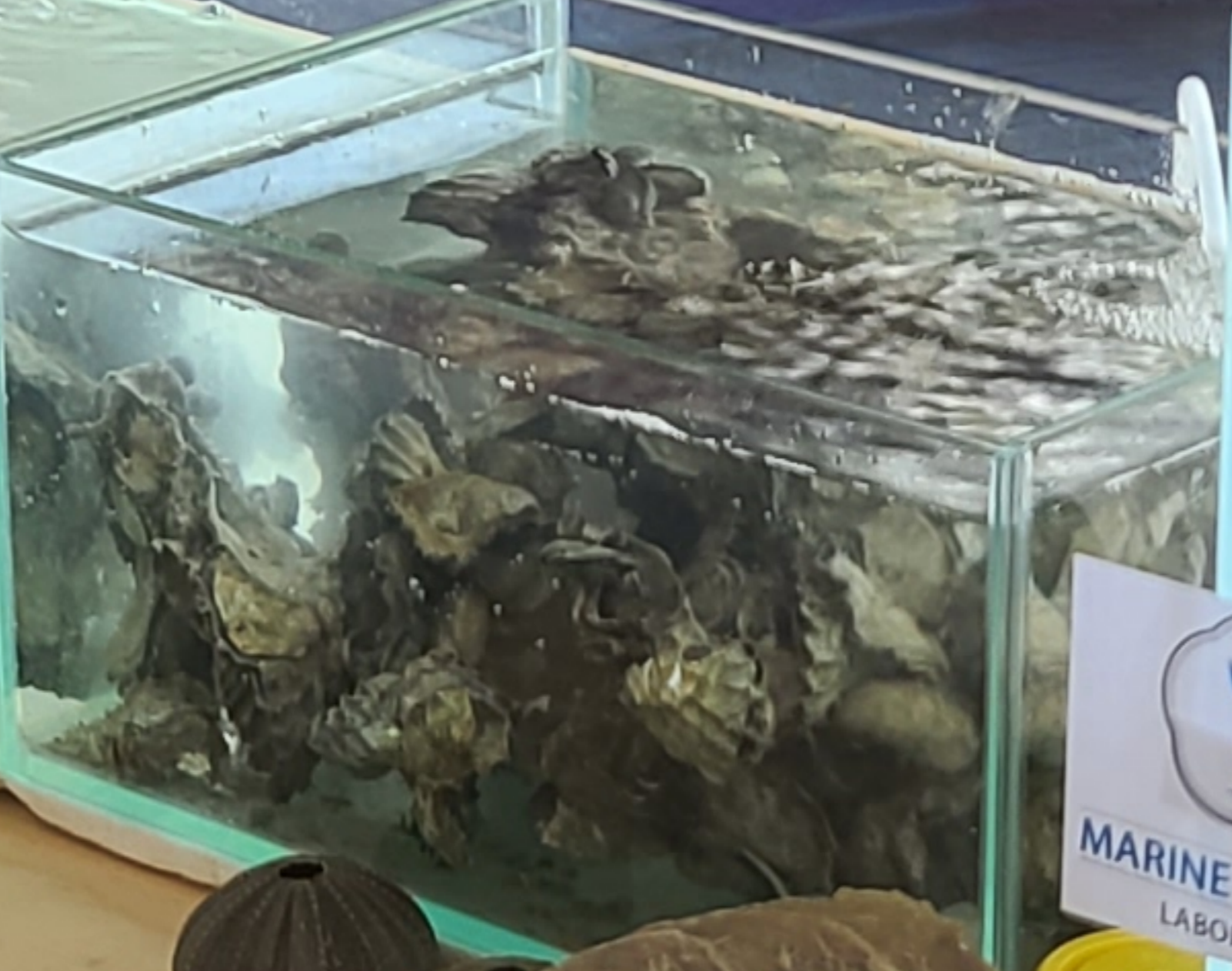


Date: 25/09/2021 (Sat)

The forgotten ecosystem: marine biodiversity of oyster habitats in Hong Kong

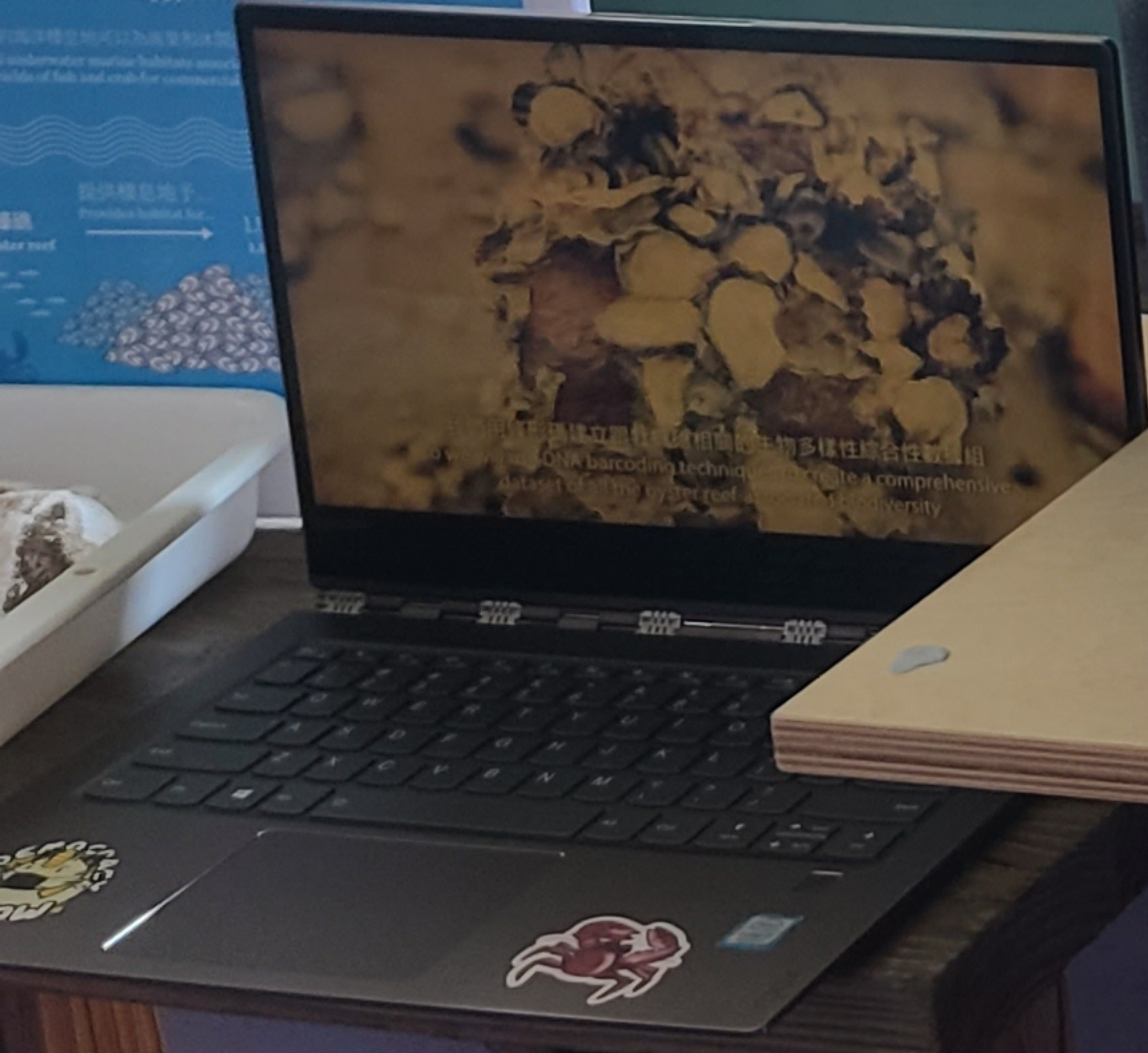
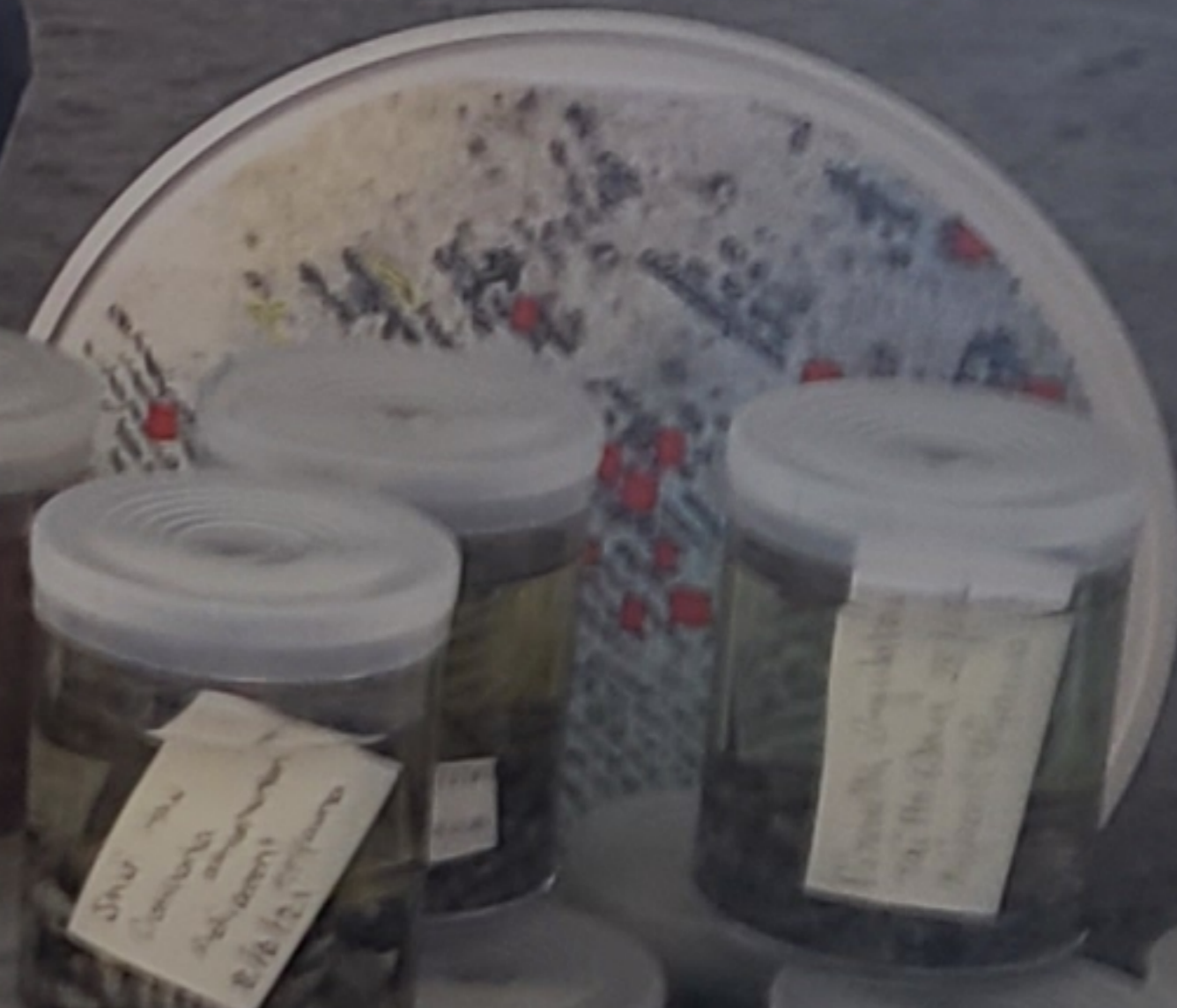
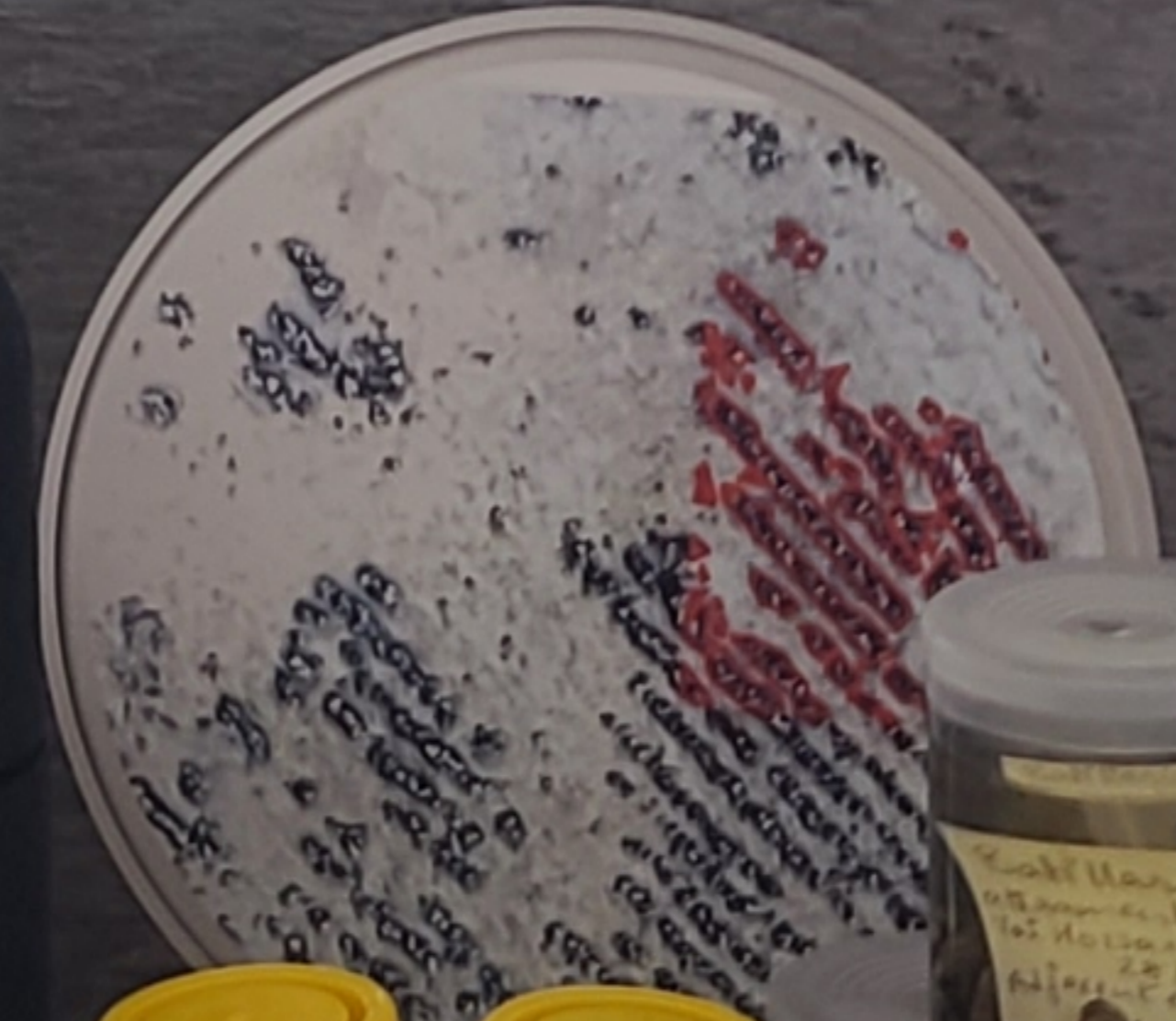
- 1. Biodiversity of oyster reefs**
Document the biodiversity associated with both oyster & soft sediment habitats in the low intertidal & shallow subtidal waters of Hong Kong.
- 2. Specimen and DNA barcode library**
Specimen & DNA collection to form a permanent record for future studies on anthropogenic impact & the effects of increasingly rapid climate change within the region.
- 3. Oyster reef mapping**
High resolution and precision mapping of oyster reefs on the intertidal mudflats within bays using a GPS equipped multi-spectral drone.





The forgotten ecosystem: mapping the remnant oyster reefs of Hong Kong

- 1. Oyster reef mapping**
Map remnant oyster reef in the intertidal mudflats and monitor reef growth.
- 2. High resolution and precision**
Use a GPS equipped multi-spectral drone which can produce image quality and coordinate that can be used for mapping reefs to 1 cm resolution.





The forgotten ecosystem: mapping the remnant oyster reefs of Hong Kong

Oyster reef mapping
Map remnant oyster reef in the intertidal mudflats and monitor reef growth.

High resolution and precision
Use a GPS equipped multi-spectral drone which can produce image quality and coordinate that can be used for mapping reefs to 1 cm resolution.



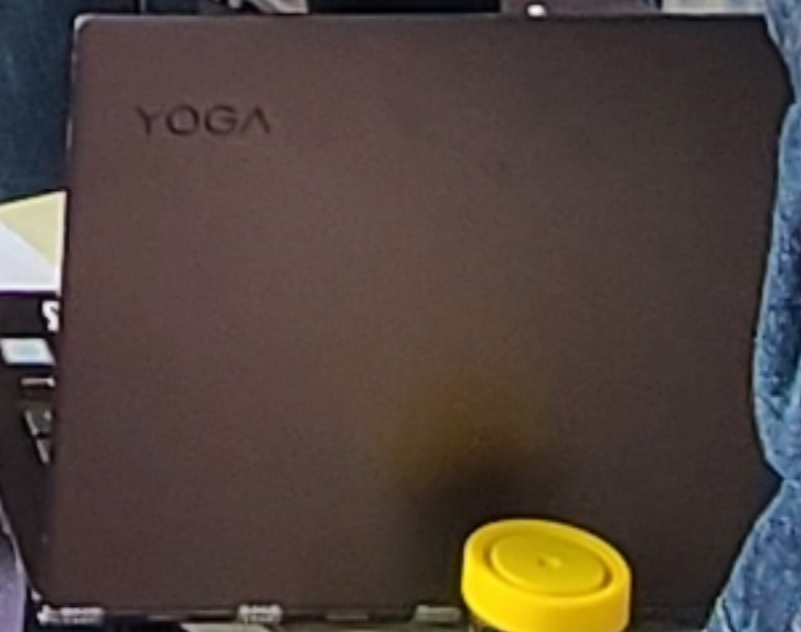
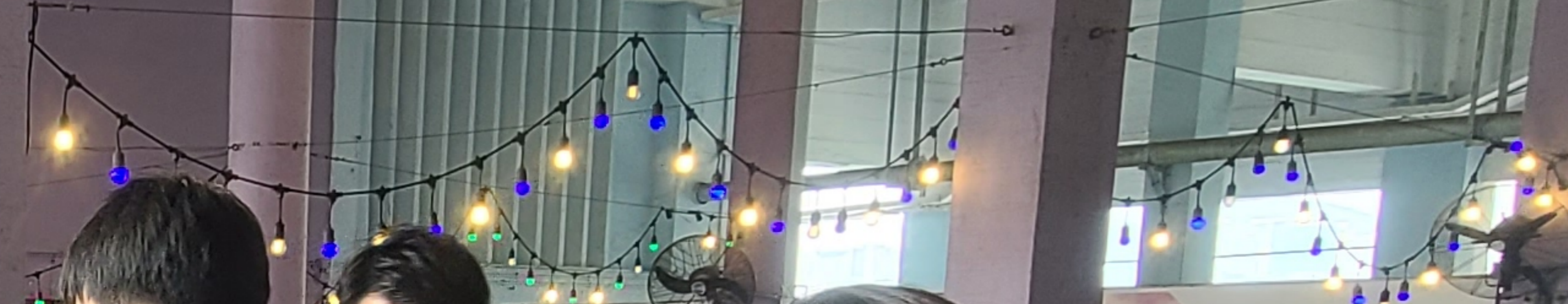
KOWLOON FERRY

地藤油

香港小輪(集團)有限公司
HONG KONG FERRY (HOLDINGS) CO. LTD.
ESTABLISHED SINCE 1923
成立於1923年

THE PRO
香港繁榮

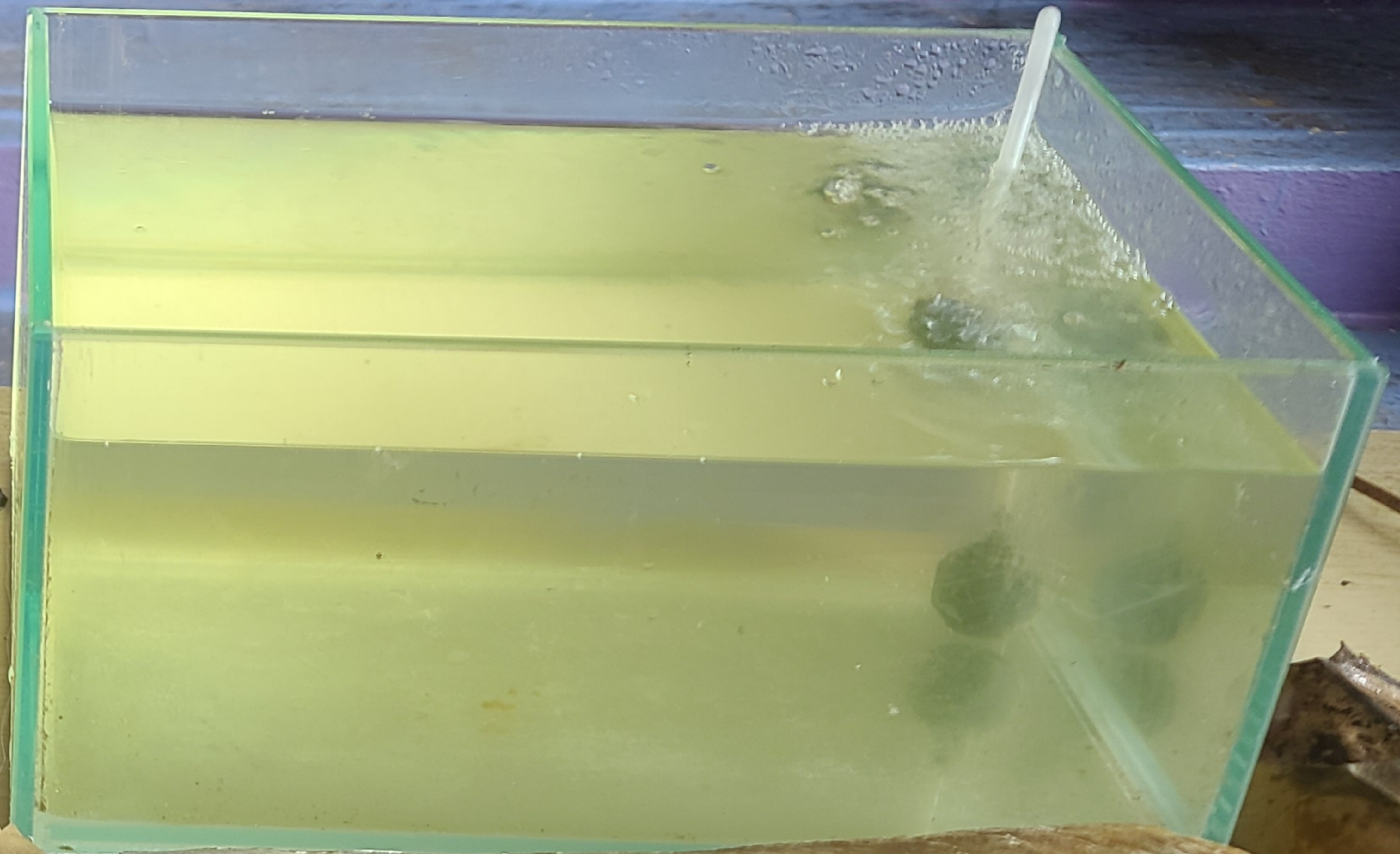
1923 125621855889



Oyster habitats in Hong Kong

1. Biodiversity of oyster reefs
Document the biodiversity associated with both oyster & soft sediment habitats in the intertidal & shallow subtidal waters of H

2. Specimen and DNA library
Specimen & DNA collection record for future research & the effects of climate change within the





CHAMPIONS

SWfMS

BIO-MIX 70 L.tr





今日節目
Today's Programme
Date: 25/09/2021 (Sat)

forgotten ecosystems
diversity of
in Hong

These forests
maintained with both
habitats in the low
waters of Hong Kong

DMA based

form a per
thropogenic
and climate

map
write

ne

